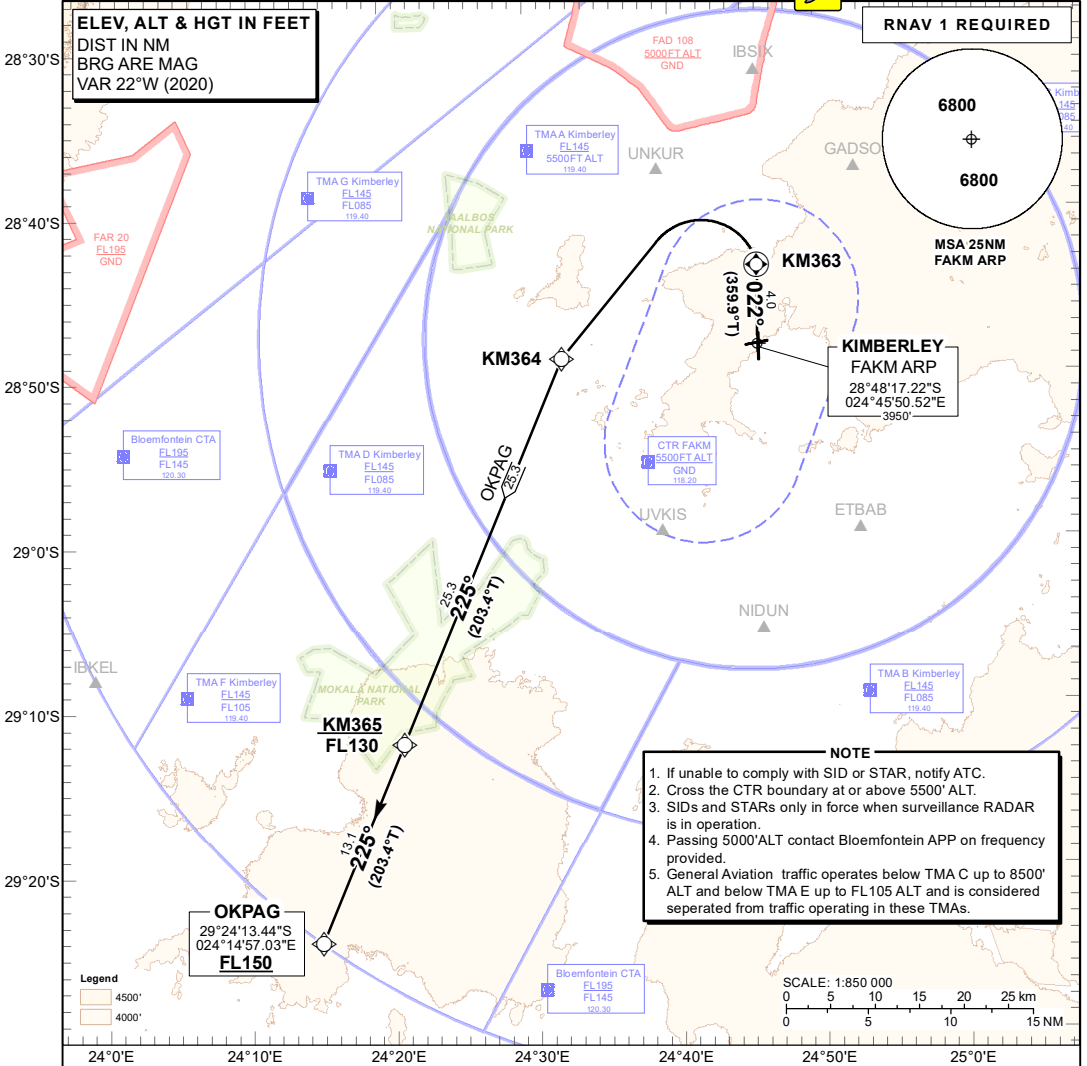


STANDARD DEPARTURE CHART - INSTRUMENT (SID)

TRANSITIONAL ALTITUDE **7000'**
TRANSITIONAL LEVEL **ATC**

KIMBERLEY TWR: 118.20
APN: 122.65
APP: 119.40
BLOEMFONTEIN APP: 124.30

KIMBERLEY RNAV (GNSS) RWY 02
OKPAG 1A



- NOTE**
1. If unable to comply with SID or STAR, notify ATC.
 2. Cross the CTR boundary at or above 5500' ALT.
 3. SIDs and STARs only in force when surveillance RADAR is in operation.
 4. Passing 5000' ALT contact Bloemfontein APP on frequency provided.
 5. General Aviation traffic operates below TMA C up to 8500' ALT and below TMA E up to FL105 ALT and is considered separated from traffic operating in these TMAs.

OKPAG 1A: RWY 02 Climb to FL150. Maintain RWY track 022°M to KM363. At KM363 turn left direct to KM364. At KM364 route to KM365 at FL130 or below. At KM365 route to OKPAG. At OKPAG set course as per flight plan.

Restricted to a minimum climb gradient of 4.0% until KM363.

4.0% @ 140KT IAS = 568 FPM
4.0% @ 160KT IAS = 649 FPM
4.0% @ 180KT IAS = 730 FPM
4.0% @ 200KT IAS = 811 FPM
4.0% @ 220KT IAS = 892 FPM

COMMUNICATION FAILURE PROCEDURE (Squawk 7600)

Comply with the OKPAG 1A RNAV (GNSS) SID. At OKPAG climb to flight plan level and set course as per flight plan.

Aircraft wishing to return to FAKM must continue as per the OKPAG 1A SID. At OKPAG turn right to IBKEL. At IBKEL comply with the IBKEL 1A RNAV (GNSS) STAR RWY 02 Communication Failure Procedure.

CHANGE: NEW Procedure